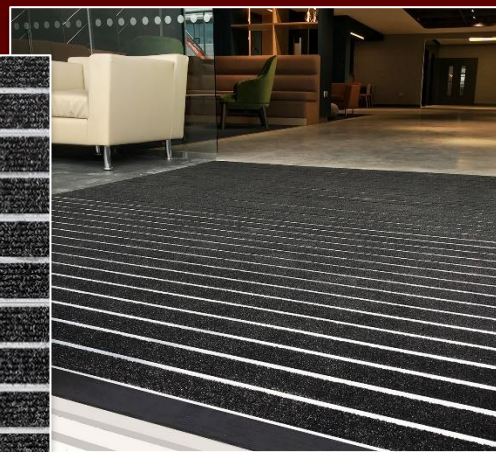
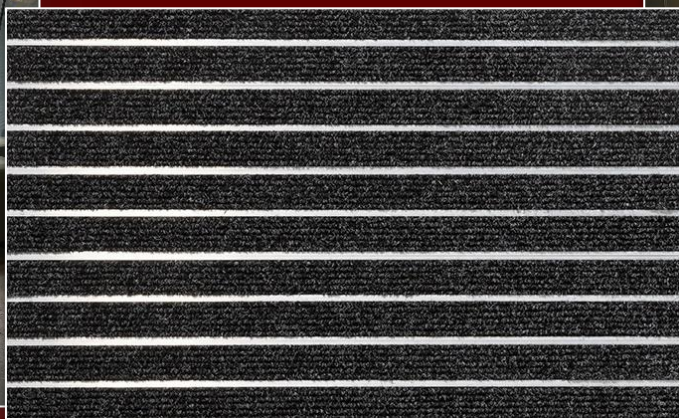




SMART ALU CLICK

Interlocking Aluminium Mat



Easy – effective – off the shelf

DESCRIPTION

This interlocking entrance mat consists of panels of aluminium profiles each containing two lines of textile inserts. The panels come with a self-adhesive acoustic strip, that joins the profiles together and has a sound absorbing and anti-slip effect. The click system makes the installation easy and as the mats are coming in boxes they are available off the shelf.

APPLICATION

The SMART CLICK SYSTEM is suitable for indoor use and comes standard with needle felt inserts. The Dry insert gives a greater performance and drying effect thanks to its polyamide fibres while the Scrub insert has added scraping fibres (regenerated Econyl®), perfectly suited for coarse dirt. Suited for low to moderate traffic.

TRAFFIC

1.000+ passages daily

LOCATIONS

Shopping Centres, Office Blocks, Hotels, Residential

SIZE

HEIGHTS: 12 mm, 17 mm

PANEL SIZE: 110 mm wide x 2 m long

PACKAGING: 10 panels - (2.2 m² per box)

COLOUR KEPT IN STOCK: anthracite rib (polypropylene)

WARANTY

10 years

INSTALLATION

The mat should be installed in an even, levelled recess surrounded by a 15 mm or 20 mm frame. The 12 mm mat can be installed on the top of the existing floor using ramp profiles. The 2 laying

methods are: Brick- bond – resulting in maximum material use and a firm base - or symmetric – for an esthetical result. For this last method, the usage of an inverted T-profile is required.

TECHNICAL DATA SHEET - SMART ALU CLICK - INTERLOCKING ALUMINIUM MAT

MATERIAL CHARACTERISTICS

Aluminium Profiles

Material	aluminium (min. 78% recycled)
Dimensions	Width 110 mm / height 7,4 or 13 mm

Insert

Textile height	9 mm
Textile width	44 mm
Textile width base	47 mm
Material drying insert	Needle Felt - 100 % polypropylene pile structure: ribs - Colours: Anthracite (V20) in stock *Grey (Vo1), *Beige (V21) * <i>on demand</i>
Material drying insert	Dry * - 100 % polyamide / pile structure: velours - Tuft density: approx. 0,115 g/cm ³ - Colours: Black (D985), Granite (D989), Brown (D982) * <i>on demand</i>
Material drying insert	Scrub * - 100 % polyamide (regenerated Econyl®) / pile structure: velours - Tuft density: approx. 0,148 g/cm ³ - Colours: Grey (S135), Brown (S132) * <i>on demand</i>

Adhesive strip

Material foam	Polyethylen
Material adhesive	Silicionised PE-foil
Dimensions	width 46 mm / height 1mm

MAT CHARACTERISTICS

The total height of the mat is 12 or 17mm. The profiles are interlocked thanks to their unique connection method and fixed through an adhesive strip. The weight of the mat is respectively 8,42 and 12,74 kg per m².

ECOLOGICAL FOOTPRINT

info@nationalflooring.ie - +353 21 4374484

The manufacturer intends to reduce its ecological footprint for each product. For that reason, all products are manufactured in line with 100% renewable energy and local materials.

We reserve the right to make adjustments to the products without prior communication.