

Aquarelle Wall HFS

WATERPROOF ALL-INCLUSIVE WETROOM CONCEPT

Invigorating
colours &
modern
designs



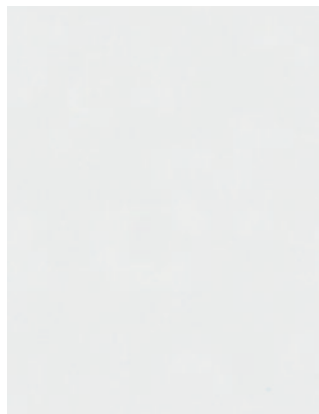
Aquarelle Wall HFS



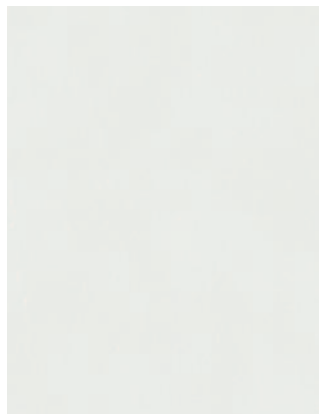
3942 027 Uni Yellow
LRV 67.10



3942 031 Uni Light Beige
LRV 66.30



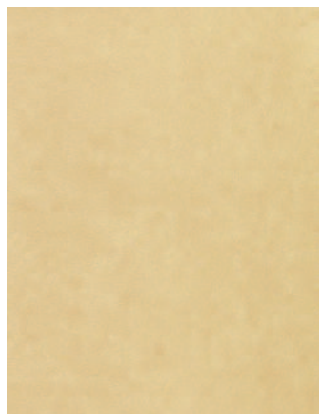
3942033 Uni Grey
LRV 68.70



3942 034 Uni White
LRV 71.30



3942 037 Uni Super White
LRV 80.30



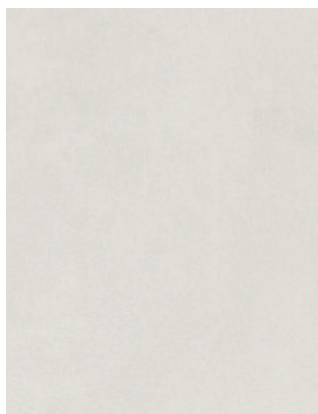
3942 038 Stone Warm Beige
LRV 50.20



3942 039 Stone Chocolate
LRV 4.20



3942 040 Stone Light Warm Grey
LRV 73.80



3942 041 Stone Warm Grey
LRV 47.50



3942 042 Stone Dark Warm Grey
LRV 12.80



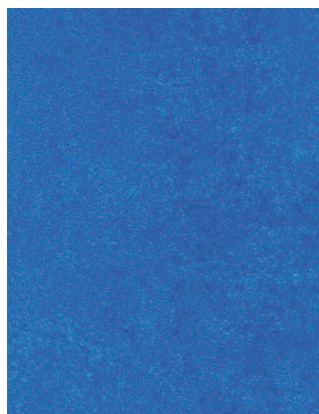
3942 043 Stone Light Grey
LRV 28.40



3942 044 Stone Medium Grey
LRV 9.70



3942 045 Stone Blue Green
LRV 14.20



3942 046 Stone Blue
LRV 50.40



3942 047 Stone Green
LRV 50.40



3942 048 Stone Orange
LRV 31.30



3942 049 Stone Dark Red
LRV 8.80



3942 050 Vogue Light Grey
LRV 55.30



3942 051 Vogue Grey
LRV 34.10



3942 052 Vogue Light Warm Grey
LRV 47.70



3942 053 Vogue Warm Grey
LRV 30.10



3942 054 Vogue Light Beige
LRV 55.80



3942 055 Vogue Beige
LRV 49.70



3942 056 Vogue Yellow
LRV 55.70



3942 057 Vogue Blue
LRV 43.20



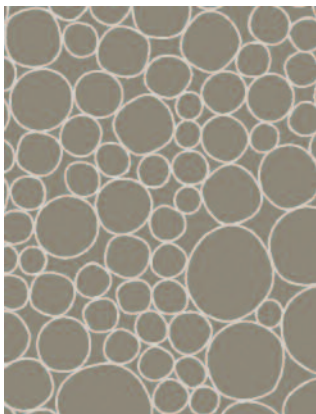
3942 058 Graphic Lines Light
LRV 68.50



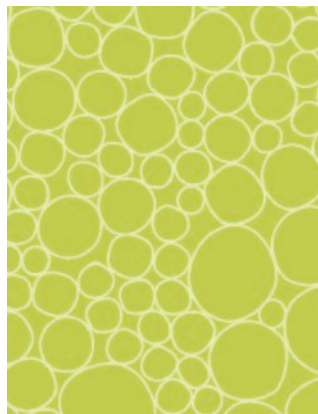
3942 059 Graphic Lines Medium
LRV 39.50



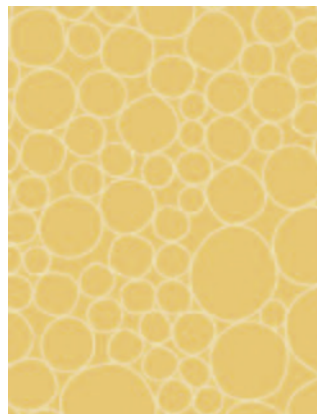
3942 060 Graphic Lines Dark
LRV 19.10



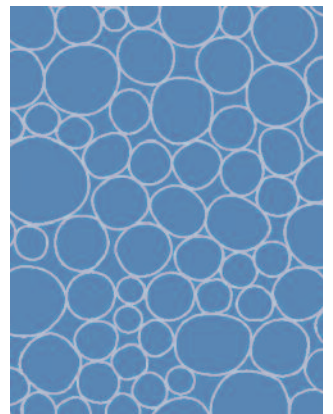
3942 061 Bubbles Brown
LRV 24.90



3942 062 Bubbles Green
LRV 44.10



3942 063 Bubbles Yellow
LRV 46.80



3942 064 Bubbles Blue
LRV 23.40

Aquarelle Wall HFS

Technical data
02-2019

CLASSIFICATION	STANDARDS	AQUARELLE WALL HFS	AQUARELLE WALL BORDERS
Type of wall covering	EN 233	Heterogeneous vinyl compact wall covering	
TECHNICAL CHARACTERISTICS	STANDARDS	AQUARELLE WALL HFS	AQUARELLE WALL BORDERS
Total thickness	EN ISO 24346	0.92mm	0.92mm
Total weight	EN ISO 23997	1500g/m ²	1500g/m ²
Wear layer thickness	EN ISO 24340	0.12mm	0.12mm
TECHNICAL PERFORMANCES	STANDARDS	AQUARELLE WALL HFS	AQUARELLE WALL BORDERS
Dimensional stability	EN ISO 23999	Lengthwise: ≤ 1% Widthwise: ≤ 0.40%	Lengthwise: ≤ 1% Widthwise: ≤ 0.40%
Reaction to fire	EN 13501-1	B- s2, d0 on non metal A1 or A2-s1, d0 class substrate	C- s2, d0 on gypsum plasterboard A1 or A2-s1, d0 substrate
Seam strength	EN 684	≥ 150 n/50mm	≥ 150 n/50mm
Chemical resistance	EN ISO 26987	Good resistance Leger (1)	Not affected (0)
Form of delivery	EN 259	Rolls: 35lm x 2m Borders: 49cm x 30-35m	Rolls: 35lm x 2m Borders: 49cm x 30-35m
Colours		32+2	30+13 borders

The above information is subject to modifications for the benefit of further improvement. (02/19). *For information only - not binding.

Slight shade variations can occur from time to time in the printing of this brochure. You should obtain a sample to be certain of a products colour.

For more detailed technical information please contact Tarkett. Follow Tarkett's installation and maintenance instruction carefully, available on request.
The values shown in the technical data are "typical values" and there may be some statistical variation away from the value shown. E&OE

Tarkett Limited

4th Floor, Connect 38, 1 Dover Place, Ashford, TN23 1FB
Tel: 0800 328 2115 Email: uksales@tarkett.com

tarkett.co.uk desso.co.uk

Visit our new UK website to see all of our
Commercial Flooring collections
[@tarkettUK](https://twitter.com/tarkettUK) [@Desso_UK](https://twitter.com/Desso_UK)

